



Wavemakers

Annual Report 2025



CATHLEEN STONE ISLAND
OUTWARD BOUND SCHOOL

Table of Contents

Letter from the CEO & President • 4

Honoring Peter Willauer • 6

A Pathway to Potential • 8

2025 By the Numbers • 10

2025 Impact Stories • 14

IN THEIR OWN WORDS: CONNECTIONS STUDENTS

CONNECTING TO SELF, OTHERS & THE NATURAL WORLD

- OUTDOOR LEARNING & YOUTH WELL-BEING
- WHERE YOU BELONG
- 21ST CENTURY SKILL-BUILDING

IN THEIR OWN WORDS: GREEN AMBASSADORS

Looking Ahead to 2026 • 21

Donors & Supporters • 23

Financials • 30

Boards & Leadership • 31



This summer, we built Adirondack chairs. The hardest part was figuring out how to secure the back of the chairs while holding them still and drilling them in. But something cool started happening. I began helping others figure out how to use the drill or hold the back in a way that made it easier. The more I helped them, the better I got at it. That's when it hit me—helping others doesn't just make their job easier; it makes you understand things better yourself.”

KELVIN • CONNECTIONS GRADUATE
Current Green Ambassador



328

Rampson Island
Outward Bound Education Center
Lives To

ZODIAC

OUTWARD BOUND

OUT



Dear CSIOBS Community,

On a crisp morning last fall, I stood on the dock and watched a group of middle school students board the ferry to Cathleen Stone Island. Some were laughing. Some were quiet. As they looked back at the skyline of Boston, I was reminded that when our students step onto that ferry, they are not just choosing to cross the harbor. They are choosing to be courageous.

Though Cathleen Stone Island sits only a few miles from downtown Boston, it offers something that can feel worlds away: space to grow, to lead, and to discover what is possible. At a time when two-thirds of children from low-income households get no more than one out-of-school learning opportunity between birth and high school, our work with Boston Public School students is vital.

In our outdoor classroom setting, students learn more than how to navigate a ropes course or climb the 62-foot Alpine Tower. They learn to work as a team, develop physical confidence, communicate across differences, think creatively about how to solve problems, persist when something feels hard, and, most importantly, believe they are capable of far more than they imagined.

This is the power of challenge-based learning. And you make it possible.

Because of your partnership, 2025 was a year of meaningful momentum. Together we expanded access to our Connections and Green Ambassadors programs so that more young people from Boston Public Schools could experience the island, providing vital social-emotional learning opportunities that stay with them for life. Both programs grew in enrollment and with new curriculum elements to engage students more deeply in their island experience. We strengthened our infrastructure by conducting a first-of-its kind island modernization study and built new partnerships across the city to ensure our programs are positioned for growth in the years to come. And we refitted our beloved MVOB ferry through collaboration with Duclos Corporation and Gladding-Hearn Shipbuilding, our ferry's original shipbuilder.

These accomplishments are the building blocks of our strategic vision: to ensure that every student who comes to the island leaves more confident, more connected, and more prepared



to navigate an increasingly complex world. The progress we made in 2025 positions us to reach more students, deepen our impact, and further integrate hands-on science and leadership development into every program we offer. Thanks to a multi-year commitment from the Stone Living Lab to develop a new science curriculum for our students, we have much to look forward to in the year ahead!

As I lead this extraordinary community, I am inspired by what happens every day. I have watched students who were hesitant to speak become team leaders. I have seen young people who doubted themselves cheer from the top of the Alpine Tower, beaming with pride. These moments are powerful not because they are dramatic, but because they are transformative. These experiences and memories stay with our students long after the ferry carries them back to their schools and neighborhoods.

You make those experiences happen.

Your generosity is more than a contribution. It is an investment in the promise and potential of Boston's young people, in their resilience, leadership, and belonging. It is the reason a student finds their voice on the island and carries it forward into their school, their community, and their future.

I am proud to share *Wavemakers*, our 2025 Annual Impact Report, with you. Within these pages, you will see the impact of your commitment: stories of growth, partnership, and possibility. I hope you read them with pride, knowing that you are an essential part of this movement.

Thank you for championing Cathleen Stone Island Outward Bound School with such dedication and care. The future is bright. The island is ready. And because of you, so are our students.



With deepest gratitude,

Sylvia Watts McKinney • CEO & President
Cathleen Stone Island Outward Bound School



Honoring Peter Willauer

In November 2025, we lost our founder, Peter O. Willauer. A visionary educator, sailor, and pioneer, Peter influenced every aspect of our programming and every corner of our island. Peter's legacy is one of enduring positive impact: the thousands of alumni who carry forward his lessons of resilience and service, the educators who apply his model of "learning through challenge," and the field of experiential education that he helped shape.

Ross E. Sherbrooke shared, "Peter O. Willauer, POW for short, and I met as adversaries racing for the Sears Bowl, the US junior sailing championship. He was always a great person and a natural leader. When he was picked to build the Hurricane Island Outward Bound School in Maine, he dove into it full tilt. It is amazing what one can do when starting with nothing. POW led the fundraising, nail-hammering, direction, growth, and success of HIOBS for many years.

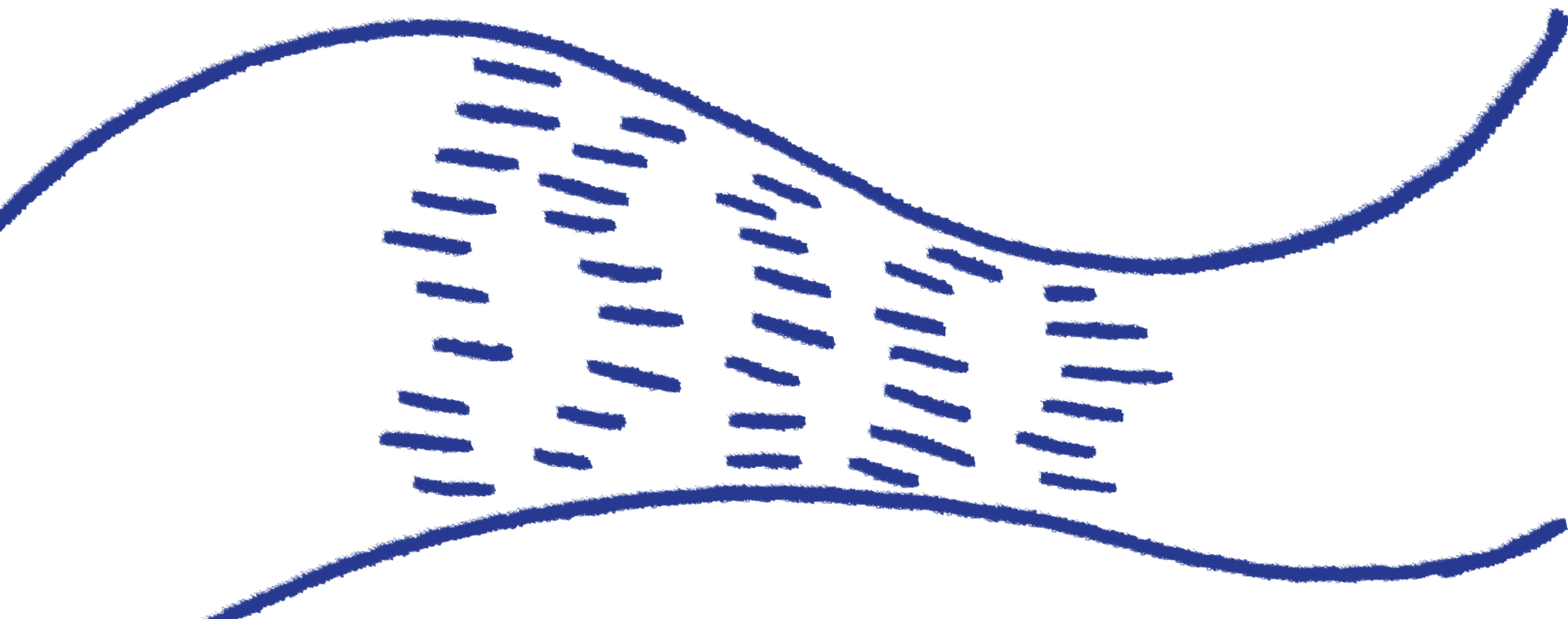
He lived for each student experiencing a granite cliff to overcome fear of heights, or cold water by jumping off a dock into Penobscot Bay and other challenges that expand courage and confidence to move ahead.

One day my phone rang and Peter said 'you and I are visiting Thompson Island tomorrow.' There were a number of visits. Thompson Island joined Outward Bound and the rest is history. What a life!"



We are not asking students to climb sheer granite cliffs because they think they can. They are doing it because they think they can't. But, whether they make it to the top or not, they will have learned something about themselves that they could not learn in any other way."

PETER WILLAUER
*(as recounted by OB alumnus
Cameron Bright)*



A Pathway to Potential

Our programs are more than opportunities for discovery. They're progressive learning sequences that prepare students to take on greater challenges with confidence and resilience. By combining Outward Bound's pioneering social-emotional learning with hands-on environmental science and climate resiliency education, students learn to connect potential to purpose so they can thrive in school, work, and the world.

CREW CLASS

In 6th grade, students begin their Outward Bound journey with Crew classes. Trained instructors join classrooms throughout Boston Public Schools and prepare students for their time on the island by playing creative, team-building games from January through March. Crew concludes with half-day programming that sets students up to push themselves and each other once they arrive on the island.

CONNECTIONS

From 6th–8th grade, students participate in Connections, our flagship on-island program. Through day-long and overnight excursions, students learn through challenges outdoors: navigating ropes courses, kayaking through the harbor, and climbing the Alpine Tower. In this program, students build foundational skills that will help them thrive in high school, gain more confidence in themselves, and learn new ways to help their community.

GREEN AMBASSADORS

Beginning in 9th grade, students can apply to join our Green Ambassadors program to dive deeper into local climate resiliency efforts. They work with the National Park Service on island land management, participate in paid internships funded by the City of Boston, and help seasoned instructors lead younger crews—providing vital opportunities for students to grow responsibility and agency during adolescence.

We're proud to partner with leading local and national organizations to enhance our programming and expand our impact.

Boston Harbor Now
Boston Planning and Development Authority
Boston Public Schools
City of Boston
Department of Conservation and Recreation
Massachusetts Water Resources Authority
MASSPORT
National Parks Service
Outward Bound USA
Stone Living Lab
The National Parks of Boston
The Trustees
United States Coast Guard
UMass Boston





“Every year, I watch my students return from the island transformed by their experiences. The skills they learn through the Outward Bound curriculum come back with them to their classrooms, their families, and their community. They learn how to lead with kindness, empathy, and accountability, critical skills that will serve them through high school and their adult lives.”

DARLENE MARCANO • HEAD OF SCHOOL
Dearborn STEM Academy, Dorchester, MA



Your generosity fueled significant impact in 2025.
Because of you...

4,199

students served,
expanding our reach
from 2024!

1,200

students welcomed
from

24

non-BPS schools,
camps and non-profits

79,620

hours students spent outdoors

Across all
programs,
students
increased...

self-awareness and
confidence by

16%

teamwork and
belonging by

15%

appreciation of the
outdoors by

12%

a sense of environmental
responsibility by

24%

appreciation of
time away from
technology by

25%

smiles?

100s

s'mores?

1000s

potential?

INFINITE

FROM GUIDE TO MENTOR

Our dedicated program instructors are more than guides. They're formative mentors for students. In 2025, our instructors took part in multiple professional development opportunities, including trauma-informed trainings led by CSIOBS Mental Health Advisor Esthephania Gómez. These sessions help our instructors meet students where they are and build stronger relationships with them. The immense trust this builds between students and instructors is the foundation upon which students take risks, practice resiliency, and unlock their full potential. **Nearly 100% of students report that instructors and staff treat them with respect.**



The Numbers

Over 11,000 visitors, volunteers, students, and guests made 2025 a banner year on Cathleen Stone Island!

A WORLD AWAY, IN BOSTON'S BACKYARD

Last year we launched several new efforts to help students, guests, and volunteers feel even more welcome on the island. We:

Introduced new visual signage and comics drawn by instructor Lee Hahn to help students understand program elements and course instructions.

Conducted post-course surveys on tablets generously donated by OBUSA. Moving to a digital format allowed us to offer surveys in English and Spanish and helped us collect nearly twice as much data as in 2024.

Completed a comprehensive island modernization study with Stantec, ARUP, Ground, Inc., Dr. Aisha Densmore-Bey, and Sebastian Ellington Flying Eagle Ebarb to identify new projects and upgrades that ensure the island remains accessible, and our operations remain sustainable for generations to come.

Incorporated culturally relevant toiletries and first aid items to ensure students feel safe and supported on the island.

Partnered with Summer Search to bring four additional cohorts to the island for kayaking and challenge course excursions.

“Feeling welcomed to the island community,” is the #1 statement students chose to represent their experience in Outward Bound.

“I trust the staff,” was one of the top reasons students felt comfortable participating in our programs.

THE POWER OF PLACE

Whether they were running our annual 4K trail race, challenging themselves in Outward Bound Professional courses, or celebrating a milestone event, Cathleen Stone Island is better because of the vibrant community that visits the island.

IN 2025

1,400

professionals from **26** local universities and businesses completed the Outward Bound Professional Program.

1,080

runners participated and **61** organizations sponsored teams in the 4K to support Boston youth.

53

companies hosted Corporate Volunteer Days, with **1,227** professionals volunteering their time and talents to support island upkeep.

35

anglers and guides competed in our annual Fishing Invitational.

9,471

guests attended **5** weddings on the island.

32

volunteers led **3** event committees.

Experiences



that last a lifetime



In Their Own Words

Our Connections program brings students from Boston Public Schools to Cathleen Stone Island for full-day and overnight challenge-based outdoor learning. For many students, their time on the island represents the very first time they've been outside the city and surrounded by nature.

“

I'm going to start calling this Awesome Island!”

“

How can it be sooooo beautiful out here?!”

“

These might be the best two days of my life!”

“

I don't want to play video games anymore. Look at all the sunsets I've missed!”

“

This was the best day ever... even better than the day I was born. And that was a big day.”

“

After two days here, I want to stay.”

“

This feels like a second home.”

“

I felt so free! Whoever made this program has got to make it longer!”

Central to Outward Bound's impact is facilitating deeper connections to self, others, and the natural world. At CSIOBS, we achieve this in many ways: closing the opportunity gap for outdoor learning, fostering a strong sense of belonging, and combining social-emotional learning with hands-on science to strengthen skills vital for the 21st century workforce.

Outdoor Learning & Youth Well-Being Connection to Self

Spending time outdoors has innumerable benefits, especially for young people. Being outside helps them develop physical confidence, facilitates creative thinking and problem-solving, and improves mental well-being.

However, a significant opportunity gap exists. Two-thirds of children from low-income households will experience no more than one out-of-school learning opportunity between birth and high school compared to youth from high-income households, who experience at least six.

Cathleen Stone Island Outward Bound School strives to close this gap. In 2025, more than 1,800 Connections students participated in full-day and overnight programming. By navigating challenge courses, working together, and pushing themselves to new heights, students gained a stronger sense of their potential and immense pride in their accomplishments.

Students gain measurable character development growth through participating in our programs. According to the Outward Bound Outcomes Survey, in 2025, our students increased:

Physical Confidence by 12%

Self-Awareness by 14%

Sense of Responsibility by 14%

Appreciation of the Outdoors by 12%

Because of the generosity of our supporters, we can continuously offer no-cost programming, refine our curriculum to maximize learning outcomes, provide comprehensive instructor training, offer hands-on science learning, and build new partnerships with local organizations to expand program access.



I've supported Cathleen Stone Island Outward Bound School for 16 years because I've seen firsthand how transformative this kind of learning can be. When young people are challenged in the outdoors, learn to work together, step beyond their comfort zones, and discover their own strength, something shifts. They emerge from this experience more confident, more resilient, and more aware of their potential. That kind of growth stays with them for life."

TYLER WICK
Proud CSIOBS Supporter



Connection to Others

Outward Bound programs are built on connection. When young people feel they truly belong, they take risks, build trust, and develop a better understanding of who they are in the context of their community.

For CSIOBS Course Director Jalen Corcione, that sense of belonging was what stood out in his experience with Outward Bound. He first came to the island as a Connections student in middle school, and returned almost by accident by tagging along when his brother interviewed for Green Ambassadors. Jalen ended up interviewing, too. He was accepted into the program, and he stayed.

Over the years, Jalen grew from Green Ambassador to seasonal instructor, then full-time instructor, and now Course Director. The common thread? Relationships. The connection he felt as a student is the same experience he now works to create for others.

“Last summer, I had this great student named Chris, who became the heart and soul of our crew. Everyone adored him. He had endless energy and always wanted to make other people laugh. I can imagine there were times in other settings where he was told to ‘stop talking’ or ‘just sit down and be quiet.’ But on the island, with our crew, he was the missing piece of our puzzle. And because he was so authentically himself, our whole crew forged powerful connections with each other.”

Today, as Jalen prepares to welcome hundreds more students this season, his goal is simple: ensure every young person who steps onto the island knows that they matter.

“We all want each other to grow as authentically as possible,” Jalen says. “I want my students to know that no matter who you are, there’s a place where you belong.”

BUILDING BELONGING

Our instructors are dedicated to living the values that are central to the Outward Bound pedagogy. Recently, they launched a new effort to make students feel that they belong on the island: ensuring that first aid and toiletry supplies are culturally representative. Whereas a few years ago, first aid kits were stocked with only light-toned band aids, today our kits are filled with different colored flesh-toned bandages and a larger selection of toiletries for different skin and hair types.



Connection to Nature

According to McKinsey & Company and the World Economic Forum, the most in-demand professional skills of the 21st century include resilience, teamwork, critical thinking, and adaptability.

At the same time, the rapid rise of the green and blue economies is reshaping career pathways, requiring young people to apply these competencies through a climate-conscious lens.

On Cathleen Stone Island, hands-on learning in natural settings immerses students in real-world challenges to foster a lifelong appreciation for the natural world. Students do this while exploring cutting-edge climate resiliency efforts being developed in their own backyard. By bridging real-world work experience with hands-on research, our students gain in-demand 21st century workforce skills. On average, our students increased:

Assertiveness by 21%

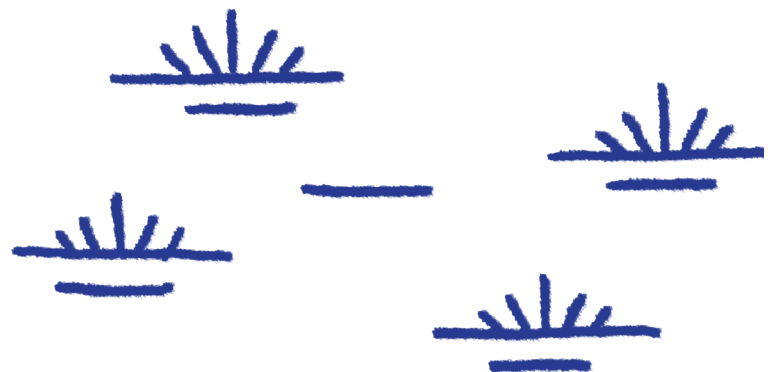
Perseverance by more than 15%

Teamwork by 15%

Our partnership with the Stone Living Lab connects this potential with purpose by offering students unique STEM experiences that link scientific concepts and current research to lived experience. Instead of reading about remedies for a changing climate in coastal cities, like Boston, students see real-time research and new design applications to address the challenges facing the Boston Harbor Islands.

UNLOCKING NEW CAREER POSSIBILITIES

Last year, students had the opportunity to connect with leaders in Boston's sustainability sector at our Green Sector Panel, a professional development opportunity exclusively for Green Ambassadors. At this panel, Green Ambassadors met senior leaders from green industries and organizations, networked with up-and-coming local sustainability innovators, and learned about new career pathways in the growing green economy.





Our partnership with Cathleen Stone Island Outward Bound School demonstrates what's possible when science education moves beyond the classroom and into the real world. Through hands-on research and field-based learning, young people aren't just studying climate resilience, they're practicing it at our island research installations. Together, we are cultivating the next generation of scientists, problem-solvers, and environmental stewards ready to protect the natural world."

KATHERINE DAFFORN, PHD
Distinguished Professor of Coastal Resilience, University of Massachusetts Boston • Director, Stone Living Lab & Co-Founder, Living Seawalls



In Their Own Words

Our Green Ambassadors program builds on the foundations students create in Connections, while also providing deeper engagement with environmental science and vital workforce development. Through outdoor challenges, project-based learning, and internships, Green Ambassadors are preparing to enter college and careers with courage, compassion, and a commitment to sustainability.



Usually, I spend my summer sitting in my room, playing games. This summer? I got to do things on the island that I've always wanted to do." • KRYS



[When I got to the top of the Alpine Tower] there was a slight breeze, and I felt it sweep away my worries, my fear, my fatigue. The corners of my lips rose, a small proud smile on my face. I've come so far." • ASHLEY



I'm so glad we spent so much time with our super fun, trustworthy, and lovable instructors! They pushed us and cheered us on, even if we didn't think we could do it." • JONARIE



What was my favorite part of Green Ambassadors? Everything! The island, the camping, the challenges... It's a really special opportunity." • MACK



This summer, I have talked more than I ever have with people I don't know. I'm gaining the confidence to step out of my shell." • RANDY



I met so many new people, and we all gave each other so much positive energy! It's not like any group I've ever been part of." • JACHAZIEL



Projects like building chairs definitely tested our patience as individuals. But something cool started happening. I began helping others figure out how to use the drill or hold the back in a way that made it easier. And the more I helped them, the better I got at it.” • KELVIN



I grew up in the backwoods of the Rocky Mountains. When my family moved to Boston, I felt like I had lost my connection to the Earth...until I came to Cathleen Stone Island.” • DEAN

Looking Ahead: 2026 Initiatives

2026 is already a year of expansion, programmatic innovations, and momentum. As we look ahead to continuing growth and impact, here are a few of the initiatives we are most excited about this year:

Expanding the number of students participating in our Connections and Green Ambassadors programs.

Developing a new best-in-class science learning sequence for grades 7-9 focused on hands-on environmental studies and climate resiliency in partnership with Stone Living Lab, UMass Boston, and the Wade Institute for Science Education at Manomet Conservation Sciences.

Operationalizing our five-year strategic plan to significantly expand programs and impact.

Advancing island modernization efforts to develop sustainable island operations, green building upgrades, and expanded accessibility and program capacity.

Honoring the 30th anniversary of the Boston Harbor Islands’ designation as a national park.

Celebrating the 25th anniversary of our fun-fueled 4K trail run, the Outward BOUND.

Relaunching the newly retrofitted MVOB ferry, thanks to the generosity of our donors and foundation partners.

Hosting an all-new fall fundraiser, The Evening Explo, at the Museum of Science’s new Public Science Common.

Our 2025 Supporters

Thank you to the many individuals and partners who make our work possible. We have made every effort to ensure this list is accurate; if we have made an error or omission, we sincerely apologize and welcome your guidance in making it right.

* = Monthly Recurring Donors
 ^ = 10-Year Consecutive Donors
 • = Deceased

\$100,000+

Advancing Access-AMBFF
 via Outward Bound USA
 Anonymous (2)
 The Durant Family ^
 Haven Trust
 Charles Hayden Foundation ^
 Connie Hershey •
 Mark & Sarah Keating ^
 Massachusetts Department of Environmental
 Protection/Boston Harbor Water
 Transportation Trust Fund
 Cliff Krauss & Ann Whittaker
 The James M. & Cathleen D. Stone Foundation
 Steve Woodsum & Anne Lovett ^
 Stone Living Lab
 Yawkey Foundation

\$50,000 - \$99,999

Durant Family Foundation
 G. Gorham Peters Trust ^
 Hershey Family Foundation
 Humane Society of the Commonwealth
 of Massachusetts
 Kingsbury Road Charitable Foundation ^
 Ruby W. & LaVon P. Linn Foundation
 Moderna
 State Street ^

\$25,000 - \$49,999

Anonymous (2)
 Anonymous ^ (2)
 Chris & Darcey Bartel ^
 BNY Wealth
 Cummings Foundation OneWorld Boston
 Scott L. Davis
 Karen & Paul DiMaura ^
 Trust of Frances Augusta Eckley
 Gable Family Fund
 Louise & Sandy McGinnes
 New Balance Foundation
 Gordon R. & Kathleen M. Penman ^
 Christopher Pike ^
 PricewaterhouseCoopers ^
 Richard Saltonstall Charitable Foundation ^
 Sanofi ^
 Jack & Helen Stewart

\$10,000 - \$24,999

Anonymous (3)
 Jeremy & Annie Baker ^
 The Cali-Evett Family
 Allan & Martha Campbell
 E&L Campbell Family Foundation
 Constellation *
 Nat & Catherine Coolidge
 Sarah & William Ducas
 Eastern Bank ^
 William & Susan Elcock ^
 Cindy & Ryan Enright
 Epsilon ^
 EY

Suzanne & George C. Gebelein ^
 James & Susan Geraghty
 Jeff & Corinne Greene ^
 Steven & Jane Hoch
 Amos B. Hostetter, III
 Jacob Family Foundation *in memory*
of Dary Jacob
 John Hancock Financial Services, Inc. ^
 David Kirk
 Kirkland & Ellis LLP
 Lilly Endowment, Inc. via Outward Bound USA
 Elisha & Carolyn Long
 Loomis, Sayles & Company
 Stephen & Laetitia Mead ^
 Morgan Stanley
 Deborah Munroe Noonan Memorial Fund
 Cheryl & Scott Pinarchick ^
 The Plymouth Rock Assurance Foundation
 PwC Charitable Foundation
 Tom & Debbie Ready ^
 Safety Insurance ^
 Charles Sanders Trust
 Clinton H. & Wilma T. Shattuck Charitable Trust ^
 Kathleen & Ross Sherbrooke ^
 Donald & Marjorie Swift
 Bruce & Sarah Taymore
 The TJX Companies, Inc.
 Anne H. & Raimund G. Vanderweil, Jr.
 Vertex Pharmaceuticals
 Roslyn Watson
 Edwin S. Webster Foundation
 Tyler & Hannah Wick
 Womble Bond Dickinson
 Greg & Emily Woods

\$5,000 - \$9,999

Anonymous
 Akamai Technologies, Inc.
 Athletic Brewing Company
 Bain Capital
 Samuel & Susan Barnard ^
 Robert P. Bland
 Blue Cross Blue Shield of Massachusetts ^
 Boston Trust Walden ^
 Nicholas & Mackenzie Brown *^
 The Brown Rudnick Charitable
 Foundation Corp. ^
 Paul & Virginia Cabot Charitable Trust ^
 Jeanette A. Callahan
 Bushrod H. Campbell & Adah F. Hall Charity Fund
 Joan Clark
 Columbia Threadneedle Investments
 Constant Contact
 Bob Coughlin
 Coverys Community Healthcare Foundation
 The Creighton Family ^ •
 Crowe LLP
 Deloitte
 FactSet Research Systems Inc. ^
 Fiduciary Trust Company
 Fisher & Phillips, LLP
 Forward Financing
 Geode Capital Management
 Global Atlantic Financial Group
 Thomas & Sarah Greenaway
 Mark & Tarah Hirschey
 Hologic
 Ipsen Biopharmaceuticals, Inc.
 Elisabeth & George Ireland
 J.P. Morgan Chase Bank N.A. ^
 John E. & Sue M. Jackson Charitable Trust
 JDL Corporate Interiors
 Rusty Kellogg
 Ryan & Jaime Kim ^
 Carolyn & George Koehler
 KPMG LLP ^
 Valerie & Thomas LaBarge

Lake Contracting, Inc.
 Liberty Mutual Insurance
 Lincoln Financial Group
 Daniel & Hollister Lyne
 Francis & Catherine Mainville
 Massachusetts Convention Center Authority
 Mr. & Mrs. Douglas Miller
 Sarah Morrison
 Henry E. Niles Foundation
 Joan H. Perera ^
 RapDev
 The Reimann Family
 Janet Roche
 Rockland Trust - Blue Hills Charitable
 Foundation ^
 RSM US LLP
 Andrew Scholte & Sarah Clark Scholte
 Robb & Dylan Scott
 Thomas Siegel
 John Simoneau
 Structure Tone, Inc. ^
 Rick & Paige Sutphin
 The Swett Family
 TA Realty
 Turner Construction Company ^
 US Bank
 Suzanne & John William
 Jeffrey & Mira Woods ^
 Megan & David Zug

\$2,500 - \$4,999

Anonymous (2)
 Acadian Asset Management
 ALKU
 Alnylam Pharmaceuticals
 Amalgamated Bank
 Arbor Realty Trust, Inc.
 Beantown Bootcamp
 The Bettigole Family Endowed
 Scholarship Fund
 Brown Advisory
 CarGurus
 CBRE | New England
 CHT Foundation
 Dr. Margaret Coleman ^
 Commodore Builders
 David & Nicole Conner
 Consigli Construction Company
 Criteo
 Darly David & Clarence Mevs
 Delicato Vineyards
 Baily Dent
 Michael Douvadjian
 E.M. Duggan, Inc.
 Flagship Pioneering
 Frontier Capital Management Co., LLC
 Matthew & Corinne Goehlert ^
 Goodwin
 Goulston & Storrs
 Grantham, Mayo, Van Otterloo & Co. LLC ^
 Guardian Life
 Neal & Donna Elizabeth Gumbin
 GW&K Investment Management
 Barbara & Warner Henderson
 Carrie & John Hitt
 Income Research + Management ^
 J. Calnan & Associates ^
 Holly & Bruce Johnstone
 Judy & Brian Kelly Family *
 Julia & Jamil Khan
 Jones Lang LaSalle
 Caitlin & Justin MacDowell
 Emily & Malcolm MacNaught
 Robert & Lauren Mahoney
 Massachusetts Convention Center Authority
 Terry & Carolyn McGuire
 Medtronic

Marva Nathan, MS
Natixis
Daisy Ortega & Greg Pierre *
Osmoses
Robert Treat Paine Association ^
PayPal
Steve & Anne Peacher
Pegasystems Inc.
Sonja Plesset & Tommy Liem
The PNC Financial Services Group
Red Hat
RhumbLine Advisers
ServiceNow
SS&C Technologies, Inc.
Sullivan & McLaughlin Co.
Michael & Martha Sullivan
Sean Sullivan
Svrluga Foundation
Edwin & Lynn Taff
Takeda
TeamLogic IT of Northeast Massachusetts ^
Robert Tishman
Vanguard Renewables
Gale & Charlie Willauer ^
Meghan & Jeremy Zuidema

\$1,000 - \$2,499

Anonymous (3)
Anonymous Fund at The Boston Foundation
Christine Abramo
Julia Abramovich
Eric Hall Anderson
Anna Maria Anthony & Peter Bradley
Arrowstreet
Thanh-Van Bang
Bank of America
Samuel Barron
Jessica Korf Beaver
Andrew Bendheim
Grace & Walter Bird ^
Neil Block
Boston Children's Hospital
Nannette & William Braucher
Patricia & Cameron Bright
Sarah Brow
Tim Burke, Burke Distributing
Gregory & Sheila Burkus
Betsy Washburn Cabot ^
Scott Caras
Chapman Construction/Design ^
Garrett Clark
Christopher Cleveland
Greg Collins
Cliff & Carey Cort
Creative Office Resources
Peter H. Creighton
Kirk & Peggy Davenport
Wayne C. Davis & Caroline Merrifield
Carolyn M. DeFalco *
Robert & Deborah Dickey
Kristin Dougherty
Beth & Ted Durant
Mike Elkas
Stephen & Suzanne Erwin
Atticus Fallon
Quentin & Violetta Faulkner
Kristen & Mark Ferris
Heather Flaherty
John Flahive
Catherine Fullerton & Thomas Hancock
Gates Foundation
Grant Thornton LLP
Linda Greene
Amy & David Gutschenritter
Harpoon Brewery
David Hohler
Gail J. Hupper

Alyson & John Hussey
Insight Investment
Cheryl Jackson
Eddie J. Jenkins
Elizabeth Kent
John & Patricia Kimpel
Nathan King
Garrett Kirk, Jr.
Jane Kirsch
Dan & Caitlin Koehler
Labviva
Beverly W. Landstreet, IV
Lauren Larson
Ruth K. Liebermann
Christopher D. Lipsett
Lawrence Longo
Hilary Lucier
Hilary & Wilson Magee, Jr.
Ashley Martin
Mayflower Advisors
Marshall Mazzarella
Hope & Wm. Shaw McDermott ^
Ryan & Kate McDonald
Theos D. McKinney, III *
Brad Miller
Mary B. & Joshua Miner
Steven & Erin Mirabella
Steven Moffitt
Marjorie & Roger Nastou ^
Kevin & Ildiko Nielsen
Nike
Jed M. Nosal
The Tris & Jamie Nuland Charitable Fund
Kathryn & Ford O'Neil
Plymouth Rock Assurance Corporation
John J. Preotle
Ali Price
Kristen & Ron Puerta
Jane & Robert Puffer ^
Raytheon Corporation
Redgate Real Estate Advisors
Alexandra Remorenko *
Jesse S. Reyes
Michelle & Aaron Rhodes ^
Dino Rizzo & Jill Carchedi
Steven Russo
David W. Scudder
Rachel & Philip Sher
Jacqueline Sirni
Catherine H. Smith
Judy Soley
Stephanie & Lee Spiegel
Stanley & Debbie Startzell
Abbot & Dorothy H. Stevens Foundation
Campbell Steward
Daniel Stone
Derek & Liz Taff
Marshall & Carlotta Taylor
Peter Tufts
The Gilbert Verney Foundation
Mark E. Walsh
Simon & Carolyn Webb *^
Jim Wellington
Thomas J. West
David & Judy Williams
Brian Williamson
William H. Wrean, Sr. ^
John & Abby Yozell

Under \$1,000

Anonymous (48)
Anonymous ^
Anonymous in memory of David Moriah
Joan & Ames Abbot ^
Abendroth, Berns & Warner, LLC
William Abramowitz
Nicole C. Abril

Jennifer Adams
Tori Adams
Caroline Affolter
Vrinda Aggarwal
Hector Agosto-Delgado
Riaz Ahmed
Ainiwaer Aiwuzaili
Kristin Aleksandrowicz
Alyssa Alexander
Taiob Ali
Mikaela Alioto
Roberto Almeida
Sally Almeida
Alex Altonaga
Rachel Anderson
Mary S. Ankner
Becky Annacone
Kaitlyn Anthes
Charles Arinello
Kwaby Asante
Filip Asberg Montgomery
Michele Astor-Pratt
Mark Attarian
Samira Avinger
Sophie Axley
Daniel Babitskiy
Geoffrey & Elizabeth Bagshaw
Bryan Baker
Julie Baldwin
Gabriella Bamford
Caroline Barbieri
Amanda Barbosa
Jose Carlos Barbosa
Damon Barglow
Jared Barilaro
Megan Bark
Tami Barney
Michael Barowsky
James Barresi
Elle Barrett
Erik Barrios
Daniel Barton
John Baschwitz
Basir Family
Eniang Basse
Rachel Bates
Stephane Batton
Dr. Karina J. Baum & Dr. Itai Vardi
Emily Bauman
Natalie Baumgardner
Sami Bautista-Yeager
Molly & John Beard
Megan Beaulé
Alex Beautz
Tori Beckeman
Adam Belanger
Patricia Bellew
Devan Bere
Julia Berg
Jill Berggren
Lindsay Bergholtz
Carleigh Beriont
Manka Berisha
Mindy Berman & Andrew Sumberg
Kevin Berry
Alexandra Betancourt
Logan Beyer
Paratrik Bhattacharya
Mansi Bhikadia
Kathryn Biegel
Ed Bielawa
Abigail Binaday
Jen Bisgaier
Adrian Bishop
Christian Bishop
BlackRock, Inc.
Robert Blake

Jill Blanchard
Julia Blatt
Amy Block
Cameron Block
Lee Block
Amy & Jack Bloom
Carlo Bocconcelli
Blair Bock
Greg Bohenko
Matthew Boilard
Thomas Boland
Gabrielle Bonk
Emily Borkowski
Kristin Borowski
Jabari Bowen
Michal Boyars
Josh Boyce
Christopher Boyle
Gail Branchini
Joseph P. Brandi
William Brazeau
Kyle Brennan
Christopher Broderick
Ruthanne Brodeur
Adam Brooks
Brandy Brooks, Ed.D.
Megan Brooks
Traci Brooks & Todd Whitelaw
Carrie Brown
Paris Brown
Philip Brown
Silvia Brudar
Zoe Brusselle
Shauna Buckley
Marielle Buffamonte
Samuel Burbank
William T. Burdo
Jeffrey Burger
Stephen Burke
Lisa Burns
Robert Burns
Angel Santos Burres & Brad Burres
Lindsay Burroughs
Joseph Bushnell
Elizabeth Butler
Pierina Cabrera
Ashley Cafasso
Amanda Calderone-Simonini
Louisa Caldwell
Cian Callahan
Katie Callahan-Muller
Jeffrey Cambria
Colton Cameron
Corby & Jordy Cameron
Hanna Cameron
Derek Campbell
Scott Campbell
Jean Gabrielle Canares
Katie Canavan
Serge Canepa
Shane Cannon
Hao Cao
Kristina Capika
Matthew Capofreddi
Maura D. Caporale
Owen Carberry
Lawrence Carchedi
Bridget Carey
Craig Carey
Meredith Carfaro
Ellen M. Carman
Madeline Carnes
Jay Carnevale
Lydia Carnevale
Christina Caroselli
Joseph D. Carroll, Jr. *^
Timothy J. Carter

Mallory Cartwright
Michael Caruso
Sasha Cassidy
Rebecca Castellano
Michelle Cates
Allison Celmer
Susan Celmer
Daniel Chapin
Kevin Charleston
Sylvester Charron
Julian Chase
Julie Chasse
Sarah Checkosky
Danielle Cheffo
Chad Chelo
Kyle Chen
Liang Chen
Shirin Chen
Christina Cheng
Amelia Cheung
Philip Cheung
Teresa Chick
Jean & John• Childs
Jennifer Chin
Ruby Chiu
Jennifer Choi
Charity Cimmino
Ari Ciunci
Porter Clancy
Kareem Clarke
Stephanie Clarkin
Robert D. Cleaveland
Ernest Coakley
Julie Cochrane
Emilee A. Cocuzzo
Kimberly Cohen
Newcomb Cole
Joe Coletta
James Colgan
Leon Collis
Thomas Colucci
Comcast Business
Gregory Conant
Adelle Condon
Eric Coners
Teresa Connors
Justin and Heidi Cook
Richard & Alixandra Coolidge
Jayna M. Cooney
William Cooney
James E. Cooper
Meredith Cooper
Peter Corcoran
Billy Cordes
Tyler Cormier
Judith Cossitt
William & Meghan Costa
Lydia T. Cottrell
Caroline Coumounduros
Gabbi Cowan
Kelly Cowan
Jackson Coyle
Anissa Craig
William Craig
Donna M. Cramer
Alexandra P. Crean
Laura Cremerius
Karen Cromer
Cece Crowther
Kenneth Cuffee
Molly Cunningham
Cody Cutler
Thomas Cyr
Emily Czarnecki
Kelly Dagdigian
Ryan Dahlgren
Michael Daley

Scott & Lisa Dalrymple
Jason P. Daly
Lori Dam
Lauren D'Ambrosio
Jock and Amy Danforth
Matthew Darula
Joe Dauksis
Simon Davies
Ralph E. Davis Charitable Trust
Kate & Mike DeBartolo
Derek DeGennaro
Ethan del Rosario
Jessica Demers
William Dempsey
Drew DePilla
Michael DePolo
Anjaneya Vinay Desiraju
Michael Desmond
Rory Desmond
Jay Destino
Michael Devens
Erin Dickie
Dean Diefendorf
Fred Diehl & Margaret Hobson
Alec Dietsch
Mia DiRienzo
Nicolas DiSciullo
Evangelia Dislaki
Jaitra Dixit
Deva Djaafar
Denise S. Dockrey *
Brian Doherty
Meghan Doherty
Jackson Donahue
Allison Donnelly
Daniel Donovan
Kelly Dougherty
Aziz Downes
Paul Doyle
Cheryl Graham
Hannah Dreska
Kate Dressel
Cornelius Driscoll
Kathryn Driscoll
Bradley Druzinsky
Michael Dube
Jonathan M. Dugas
Simon Dujardin
Robert Duncan
William Dunigan
Charles Dunningham
Chien Duong
Jeevitha Durairaj
Ryan Durr
Justin Dutcher
Courtney Dwyer
Kate Dwyer
Sarah Dwyer
Sarah Eberspacher
Juan Echeverri
Kristen Eddy
Heather Edlund
Scott Edmondson
Dale C. Edmunds & Barbara A. Fay
Andrea Eigerman
Mark Eleoff
Katherine Elfers
Naomi Elliott
Osama Elsayed-Ali
Leyla Emrani
Johannah Engel
Matt Engler
Lee Englert
Justin Esposito
Michael Evans
Daniel Evarts
Eversource Energy

Lyuba Eydlin
Rachael Fabian
Sara Faria
Abdul Farooq
John Favazzo & Matthew Gianferante ^
Adam Fazzini
Andrew Ferren
Taylor Feery
Daniel Feig
Carolina Fernandez
Joshua Fidalgo
Michael Finalborgo
George Findlay
Colleen Finn
Kevin Finn
Orly Fisch
Garrett Fitzgerald
Megan Fitzgerald
Noah Flaniken
Kimberly Fletcher & John Hussey
Katie Florence
Shelagh Fluharty
Stefanie Foisy
Melanie Foley
Abrigal Forrester & Kamilah
Drummond-Forrester
Gary Forziati
Evan Fowler Guzzardo
Kristin Francisco
Nicholas J. Franco
Kellianne Frankel
Tim Fraone
Kaitie Fraser
Thomas Fritz
Matt Gaither
Lauren Galenski
Kelly Gallagher
Patrick Gallagher
Carlos Gama
Martha & Michael Gangemi
Christopher Ganio
Hailey Gardner
Andrew J. Gasparrini
Kathy Gasperine
Chetan Gavankar
Meagan Gavin
Justine Gearin
George Gebelein & Nayantara Joshi *
Samantha Gellert
Jimmy & Kellie Geraghty *^
Sheila Geraghty
Daniel Giacalone
Brad Gibson
Molly Giffen
Jeffrey Gilbert
Nicole Gilbert
Ingrid Glitz
Patrick Glynn
Travis Goding
Varun Gogineni
Ryan Goldstein
Jeremy S. Gonsalves ^
Ethan Goodrich
Cecilia Gordon
Emma Gordon
Mark Gottesman
Melanie Gotts
Pramila Govindagowda
Daniel Grady
Vicary Graham ^
Joe Gramelspacher
Ashley Green
Hilary Greenberg
Myles Grenier
Kevin Grondin
Jennifer Guerrero
Marina Guigli

Martin Guinee
Kim Gutner
Alyssa Gutner-Davis
Tatyana Gutt
Robert Haberkorn
Rob Hackett
Lyla Hage
Deming Haines
Joseph Hainly
Martin Hajek
Drew Hale
Alice H. Hall
Donald Hall
Michael Halligan
Noreen Halloran
Elizabeth Hamel
Steven Hamm
Brenda Hammerstrom
Liz Hammond
Lori Hampton
Khai Hang
Jeffrey Hannon
Bryan Hansen
Sabrina Hardin
Caeley Harihara
Kali Harnish
Tyler J. Harrington
Bonnie G. Hart
Chris Hartery
Robert Hartigan
Sonja Hartmann
Sarah Harty
Caroline Haswell
Catherine Hayes-Duffey
Sabrina He
Jason Healy
Emily L. Heeren *
Kristen Hefferon
Louise Henningsson
Alex Herbert
Elaine Herbst
Steph Herron
Tommy Hessel
Andrea Hicks
Michelle Hicks
Christopher Higgers
April Highlander
Douglas Hill
Kasey Hill
Paige Hillis
Michael V. Hirsch
Chi Hoang
Kay & Philip Hodge
Owen Holtz
Debby Hopps
James Houghton & Connie Coburn ^
Jonathan Howard
Sarah Howard *
Laura Howell
Joshua Hoyos
Shawn Hoyt
James Hoyte & Norma Dinnall
Zoe Huang *
Lynn Hubbard & David Zapolsky
Lawrence Huber
Tyler Hubert
Connie Hudson
Janine Huey
Brendan Hughes
Conor Hughes
George Hughes
Georgie Hulse
Simon Hulse
Clara Hunnewell
Fisher Hunnewell
Collette Hurley
Kara Hurley

Sherry Hyland
Thomas Hynes
Cathy Iacobo
IBM Corporation
Stephen K. Irvin
Gavin Isbell
Mollee J.
Luke Jaciw-Zurakowsky
Rockwell M. Jackson
Faye Jacobs
Emma Jadul
Edward Jaeger
Heidi Jaeger
Amy Janezic
Kyle Jarosz
Candace & John Jenkins
Jack Jeong
Yi Jin
Ally Johnson
Emily Johnson
Ken Johnson
Kyle Johnson
Maeve Johnson
Matthew Johnston
Blake Jones
Jonathan Jump
Steven Kaczmarek
Brian Kaiser
Chase Kaiser
Venkat Sankruth Kakulamarr
Elisabeth Kandryszawtz
John Kane
Andrew Kaplan
Hannah Kaplan
Samuel Kaplan
Elvi Karapanco
Jairam Karuturi
Stephanie Katsompenakis
Alexa Katz
Gregory Katz
Sukhwinder Kaur
Patricia Keefe
Allison Keel
Steph Keel
Barlow Keener
Douglas & Kathy Keith
Alexandra Kelly
Avery Kelly
Sarah T. Kelly ^
James Kenary
Kyle Kessel
Ahlem Khaled
Hetal Khatri
Callie Kiernan
Alba Kiihl
Jane E. King
Ping King
Samantha Kinkead
Natalie Kitchen
Andrew Klein
Diana Klimas
Elizabeth Klopfer
Kaela Klotz
Spencer O'Connor Kmetz
Sarah Knapp
Evan Knight
Sara Knudsen
Koushik Koley
Eddie Koranda
Anu Kotagiri
Andrew Koure
Kelly Kowalski
Colten Krekeler
Jacob Krivitsky
Jakub Kucharzyk
Sunil Kulkarni
Niranjan Kumar

Mugunth Dhinesh Kumar
Narcisse M. Kunda
Hoa Ky
Gloria Lacek
Kimmi LaCroix
Aaron LaFauci
Zachary Lagana
Matthew Laidman
Tu-Van Lambert
Russell Lambert
Jessie Lambrecht
Erika Lancaster
Bradford Landry
Gabriel Lane
Edward Langley
David LaPierre
Braden Laspisa
Ian Lavery
Paul Lazarek
Andrew Le Feuvre
Chuong Le
Dana Le
Ellen Le
Hao Le
Khanh-Anh & Brandon Le
Minh Le
Tammy Le
Tung Le
Gavin Leavay
Randi LeBlanc
Sean Leblanc
Hayley LeClair
David S. Lee
Andrew Leeds
Jeffrey Lees
Adam LeLacheur
Brendan Lemire
Deana Leparskas
Thomas Letteri
Brendan Levine
Elizabeth Levine
Brian Lewis
Debbie Lewis
Isaac Lewis
Jason Li
Evan Liddy
Ben Likis
Fanny Lin
Li Ci Lin
Cindy Linde
Stephen Lindemann
Dan Lindner
Christine Linnehan
Lesley Liu
Nathali Lizerbram
Rebecca LoCoco
Richard Lombard
Alvania Lopez
Valeria Lorenzi
Ellen Lotufo
Matthew Low
May Low
Cassidy Luitjen
Ryan Luks
Allison Luther
Kathleen A. Luvisi
Andrew Lydon
Cary Lyford
Mike Lynde
Thomas Lynn
Jeffrey MacCune
Brian MacDonald
Jennifer MacHaffie
Pamela MacKenzie
Connor MacLean
Marilyn D. MacLeod & Paul M. Robinson
Marimuthu Madasamy

Ann Maderia
Garrett Magill
Mukta Maheshwari
Morteza Mahjour
Tara Mahon
Jackie Mahoney
Maisie Mahoney
Margaret Mahoney
Mariel Maling
Krishna Mandala
Kyle Manlogon
Paige Manning
Mark Manolakis
Jennifer Manor
Manulife Asset Management
Kendra Marchant
Deborah Marchiony
Michelangelo Marcoccio
Daniel Marra & Barbara Leonard
Ashley Marshall
Andrea Martin
Jackie Martin
Max Martin
Bev Martinez
Zachary Martins
Christopher Martinson
Wendy L. Masler
MassMutual Financial Group
Elizabeth Mastromonaco
Sophie Mathews
Sara Matlock
Tom Maxwell
Alexander May *
Jennifer & Mike May
Robert Mayne
Matthew & Jacob May-Smith
Meghan McAneny
Erica McArdle
Sarah McAuliffe
Stephanie McAuliffe
Steven & Patricia McBain ^
Ryan McBride
Joseph McCallion
Matt McCambridge
Jim & Linda McCann
Sophia McCann
Drew McCarthy
Michael McCarthy
Tom & Rita McCarthy
Joe McConkey
Benjamin McCormick
Donna & Steve McDonald
Kate & Ryan McDonald
Sean McDonald
James McGowan
Michael McGowan
Mike McGowan
Tom McGuire
John McHugo
Devon McKenna
Tim McKenzie
Jack McKeon
Greg McKinney
Kaitlyn McKinnon
Miranda McLeer
John McManus
Rachel McManus
Kate McNulty
Brian & Janice McPhillips ^
Jennifer Meade
Kevin Mehra
Tejas Mehta
Anna Meiring
Noah Mellen
April Mendoza
Robert Mercier
Louis Mercuri

Andrew Merlina
Robert Metzger
Sylvia & Charles Meyers ^
Andrea M. Micci
Elizabeth A. Micci
Lauren Michaels
David Michaud
Morgan Milko
Alex Miller
Bruce Miller
Jessica S. Miller
Connor Milley
Jill & Todd Milne
Savana Minerva
Alina Minkova
Craig Minoff *in memory of Judy Yablong*
Nicole Miranda
Jeannette Mitchell
Kayla Mitchell
Eleanor Moffitt
Tanya Mohr
Raul Mojica
Garrett Kirk & Elena Molokotos *^
Clare Moloney-Kolenberg
Nicole Moniz
Amy Moore
Erica Moore
Leanne Moore
Michael Moore
Jackie Moose
Sean Moose
Carlos J. Morales
Steven D. Morgan
Will Moriarty
Brian Morin
Wesley Morris
Eugene Morrison
Ralka Mouradov
Kenneth Moy
Allison Moylan
Max Mueffelmann
Marcus J. Mueller
Lauren Muise
Daniel Mullane
Nancy Mullane
Jeff Muller
Ritvik Muralidharan
Jennifer Murphy
Lauren Murphy
Liv Murphy
Michaela Murr
Charlayne Murrell-Smith
Matthew Nadworny
Sara Nanez
Ted Natoli
Victoria Neault
Tripp Needham
Sarah Neily
Hannah Nelson
Robert H. Nelson
Sally Newhall
Wyatt Newhall
Leonard Newman
Nicholas Ng
Dave Nguyen
Hoa Nguyen
Kimberly Nguyen
Michael Nguyen
Khristopher Nicholas
Em Nichols
Shaun Nichols
Mark Nimblett
Maarten Noordzij
Ben Northrop
Adam Noska
Bradley Nullmeyer
Michelle Nulty

Conor O'Brien
 Steven O'Brien
 Meredith & William O'Connell *
 Andrew O'Connor
 Patrick O'Connor
 Lauren O'Donnell
 Michael O'Donoghue
 Kevin O'Flaherty
 Maureen O'Gara
 Joan Ohanian & Mossik Hacobian
 Connor O'Keefe
 Meghan O'Keefe
 Jeannie Olander-Colson
 Steven Olechna
 Michael Oliveira
 Tara Oliver
 Jack Olsen
 Terence O'Malley
 Shannon O'Mara
 Steve O'Mara
 Donald Onnis
 Aram Orchanian
 Rob Orell
 Jessica E. Ortega Weber
 Nicole Osborne
 James O'Shea
 Diane Oshin
 Johanna Osiecki
 Aaron Osowiecki
 Terrence O'Toole
 Max Pacheco
 Alexander Packard
 Matthew Pagos
 Paige Palley
 Louis Palomeque
 Jennifer Pangburn
 Bishnu Panigrahi
 Michael Panos
 Anthony Paolillo
 Andrea Paolino
 Julien Papillon
 Jenna Parafinczuk
 Alfred Parker
 Haley Parker
 Timothy Partridge
 Todd Partridge
 Chetak Patel
 Shreya Patel
 Sveta Patel
 Lily Patterson
 Abigail Paul
 Allison Pearson
 Arthur Pearson & Barbara Harris
 Hugh Pearson
 Katharine Pearson ^
 Stefan Pelletier
 Joan & Robert Penney
 David Pepin
 Myra B. & Steve Peraino
 Brooke Perault
 Judith W. Perera
 The Perry-Boucher Family
 Gregory Persad
 Robert Pescod
 Jake Petrillo
 Hue Phan
 Austin Philie
 Christopher Phillips
 Mary Phillips
 Christine Pierre
 Rajesh Pillai
 Daniel Pinckney
 Martha Pineda
 Pasquale Pontoriero
 Beth C. & Mark J. Porter
 Michelle Porter
 Isabella Poschmann

Daniel Poulton
 Roberta Powell
 Brajendra Prasad
 Melissa Prescott
 Jason Price
 Rebekah Price
 Tarrah Price
 Saphen Pring
 Petey Prinn
 Angelica Provost
 Robert Partridge
 Andrew Quagliaroli
 Quaker Hill Foundation
 Jaime Quintana
 Daniel Rabasco
 Abhishek Rajendran
 Sue & Wayne Ralph
 Kyleigh Ramos
 Caitlin Rams
 Pierce Rasmusson
 Anna Rathbone
 Genevieve Raushenbush
 Joe Raymond
 Anastasia Rechif
 Karen Reddish
 Christopher Reed
 Jason Reed
 Carla Reeves
 Derek D. Reformat
 Matt & Julie Reimann
 Thor N. Reimann
 Colleen Reinert
 Katie Reinert
 David & Amanda Reinfeld
 Anna Renkert
 Johnetta Renkert
 Kristi Renkert
 Paul Renkert
 Nina Resetkova
 Michael Reynolds
 Nicholas J. Riccio
 Heather Ridill
 Heather Rielly
 Collin Riley
 Michael H. Rinaldi
 Patricia & Dennis Roaf
 Bree Roberts
 Laura K. Robinson
 Sofia Robinson
 James Robson
 Michael Roche

Collette Rock
 Daniel Rodd
 Emily Rodgers
 Francisco Rodriguez
 Thomas Roemer
 Justin Rogers
 Desmond P. Rohan
 Carly Romanow
 Kathleen Romeo
 Rachel Romeo
 Richard Romeo
 Victor Romeo
 Seb Romero
 David Root
 Zachary Roper
 Joseph M. Rosano
 Katelyn Roseberry
 Josh Roselli
 Jason Rosenfield
 Jonathan & Pamela Rosin
 Carl Ross
 Andreea Rosu
 Andrew Rothstein
 Hannah Rowe
 Karen Rubin
 Kyla Rubin
 Paul Rubin
 Derek Rubinoff
 Nikita Rudinskiy
 Kayla Rufo
 Christopher Ruggio
 Tim Rupert
 Cassandra Russell
 Olivia Rustic
 Robert Ryan
 Thomas Ryan
 Salesforce
 Caroline Samaras
 Parsekh Samouelian
 Omar Sanchez
 David Sandell
 Luc Santerre
 Anthony & Julie Santosus
 Reno Sarge
 Steve Sarkis
 Timothy & Nancy Saunders ^
 Sean Scales
 Phil Scali
 Zachary Scannell
 Christopher Scarpa
 Alexa Schaefer

Tyler Wick, Proud CSIOBS Supporter





Luke Scheibel
 Chris Schinkmann-Bonias
 Lillian Schneider
 DJ Schrag
 Ashley Schrage
 Stephen & Joyce Schultz
 Kathleen Schurman
 David Sciaudone
 Arnold Scott
 Kenneth Scott
 Caroline Scully
 Margaret Scully
 Amy Seagroves
 Lex Sears
 Leah B. Segal
 Carmen Segarra
 Aaron Selcov
 John Self
 Kellen Self
 Ryan Self
 Santiago Semino
 Donald Semro
 Payton Sessions
 Morgan Sessoms
 Alexis Shaftel
 Sabrina Shah
 Emily Shane
 David Shapiro
 Kristin & David Shapiro
 Ereik Sharp
 Kelly Shaw
 Colin Shea
 Marybeth Shea
 Anna Sheehan
 Meghan Sheehan
 Jared Sheperd
 Alma Sheqi
 Ashlee Sherman

Jose Scherrer
 Kate Shields
 Kristen Shields
 Andy Shin
 Steve Shiner
 Wai Lau Shing
 Jake Shippee
 Ishan Shukla
 Hin Ho Shum
 Tony Shwartz
 Jim & Cindy Sia
 Jeremy Siden
 Mae Faith Sienes
 Srinivasa Silam
 Stephen Siligato
 Emily Simas
 David Simon
 Michael Simon
 Devinder Singh
 Sarah-Jo Sinnott
 Youmna Sirgi
 Nick Sirianni
 Ireland Sirni
 Michael Sirni
 Cynthia Slattery
 Brendan Smith
 Brooke Smith
 Danielle Smith
 Erich Smith
 Georgine Smith
 Jason Smith
 Matt Smith
 Tyler J. Smith
 Megan Smyth
 Glenn Snell
 Hannah Snow
 Theresa Snow
 Victoria Snow

Madison Solheid
 Lynn Sommer
 Mark Souder
 Kim Spears
 Joseph Spielmann
 Lisa Spollen & Raymond Bligh
 Morgan Spray
 Kristin Stachler ^
 Kerry Stakem
 Nicholas R. Staley
 Glen Stankus
 Ian Stearns
 Mary Lee Stein & Mark Rosenman
 Jochen Steinbrecher ^
 Dola Hamilton Stemberg Charitable
 Foundation
 Naomi Stephen
 Joshua Stewart
 Stanley Stolarz
 Elisabeth Stoll
 Chang Su
 Patricia R. Sullivan
 Sophia Sun
 Charlotte & Timothy Surgenor ^
 Fred Sutcliffe
 Michael & Kathryn Sutphin
 Adam Swaim
 Sam Swain
 Chris P. Sweeney ^
 Allyson Switzgable
 Terry Sylvester
 Joseph Szafarowicz
 Laura Tai
 Christian Tannous
 Alaina Tansino
 Matthew M. Taylor
 Ross Taylor
 William Taylor
 Victor W. Terranova, Jr.
 Alex Terry
 Angelo & Dayna Thalassinios
 Mike Theriault
 Megan Thibault
 Emma Thomas
 Caitlin Thompson
 Edwin Tiffany & Joan Thacher
 Joyce Todisco
 Gloria Tong
 Brian Toohey
 Owen Torgersen
 Noah Torname
 Chris Toth
 Alison Towle
 Thomas H. Townsend
 Joshua Tozier & Jacqueline Dunn
 Mike Travaglini
 Michael Traverse
 Debbie Trewitt
 Kai Tribble
 TripAdvisor LLC
 Matthew Trivella
 Elizabeth Trotta *
 Wyatt Troy
 Sara True
 Nasan Tsengge
 Natalie Tucker
 Nihal Tugcu
 Kevin Tully
 UBS Financial Services
 UHG
 Jackson Ullrich
 Anton Ulyanov
 Casey Upadhyaya
 Lisa Vahey
 Emma Valentine
 John Valickus
 Kyle VanDermark

Ann Varella
 Rosamond Vaule
 Anthony Vega
 Ellie Veith
 Verizon Foundation
 Olena Vienneau
 Suzanne Villee
 Thuytien Vo
 Jeffrey Vogel
 Frederick Volp
 Andrea Volz
 Tina Vulgaris
 Louise Wager
 Richard Walega
 Erin Walker
 Laurie Wallace
 Aidan Walsh
 Katherine Walsh
 Paul Wang
 Victoria Wang
 Yahang Wang
 Linda Watchmaker
 Neil Watson
 John Wayman
 John & Patricia Weeks
 Robin Wehbe & Leigh Ann Steel
 Jonathan Weizman
 Julian Wellesley
 Cheryl Wessel
 Matthew Wessel
 Carla Westcott
 David Westcott
 Amber White
 Stacy White
 Jennette Whyte
 Sarah & Galen Wilk
 Saylor Willauer
 Denise & Gerry Wilson
 Marianne Winkelman
 Gregory Wirak
 Katie Wojcik
 Joseph D. Wong
 Kelly Wong
 Mabel Wong
 Emily J. Wood
 Ted Woodard
 Emma Woodhouse
 James Woods
 Kevin Wooten
 Tevin Wooten
 Catherine Workman
 Keisha Wright
 Samuel Wright
 Darlene Wynne
 John Wysocki
 Jung Yang
 Savannah Yeroschak
 Suh Yoon
 Dina Yorke
 Zoe Yorke
 Susan Yoshioka
 Hye Sun Yun
 Mark Zagata
 Sarah Zarnowski
 Shannon Poppe Zaruba
 Justin Zaugg
 Ken Zhen
 Jia Zhou
 Sheng Zhu
 Jean Zick, Juna Financial Solutions LLC
 Kerry Ziller
 Donald Ziniti
 David Zippin
 Aaron Ziulkowski ^
 Douglas Zucker
 Kevin Zygmunt
 Grace Zygowski

Motor Vessel Outward Bound (MVOB)

Refit Supporters

Anonymous (4)
 Boston Harbor Water Restoration
 Jock and Amy Danforth
 Karen & Paul DiMaura ^
 Sarah & William Ducas
 Suzanne & George C. Gebelein ^
 Amos B. Hostetter, III
 Humane Society of the Commonwealth
 of Massachusetts
 Mark & Sarah Keating ^
 Rusty Kellogg
 Ryan & Jaime Kim ^
 Cliff Krauss & Ann Whittaker
 Ruby W. & LaVon P. Linn Foundation
 Louise & Sandy McGinnes
 Steve & Anne Peacher
 Gordon R. & Kathleen M. Penman ^
 Christopher Pike ^
 James M. & Cathleen D. Stone Foundation
 Donald & Marjorie Swift
 Tyler & Hannah Wick
 Gale & Charlie Willauer ^
 Greg & Emily Woods
 Steve Woodsum & Anne Lovett ^
 Yawkey Foundation

Kurt Hahn Legacy Society

Anonymous
 William S. Ames
 Eric Hall Anderson
 Art & Donna Appel
 Chris & Darcey Bartel ^
 Robert P. Bland
 Lee Campbell
 Hanne & Frank Castle
 Dr. Margaret Coleman ^
 Nat & Catherine Coolidge
 Peter H. Creighton
 Karen & Paul DiMaura ^
 Cindy & Ryan Enright
 Quentin & Violetta Faulkner
 William P. Gately
 Barbara & Warner Henderson
 Elisabeth & George Ireland
 Eddie J. Jenkins
 Mark & Sarah Keating ^
 Amy & Michael Koehler
 Cliff Krauss & Ann Whittaker
 Jenny & Jay Leopold
 Laura & Tom LeTourneau
 George Lewis
 Hilary Lucier
 Richard G. Lucier
 Hope & Wm. Shaw McDermott ^
 Terry McEnany & Marjorie Bride-McEnany
 Louise & Sandy McGinnes
 Stephen & Laetitia Mead ^
 Thomas H. Niles
 Jeffrey & Mary Anne North
 Joan H. Perera ^
 Frederick G. Pfannenstiehl
 Tom & Debbie Ready ^
 Michelle & Aaron Rhodes ^
 Janet Roche
 Rachel & Philip Sher
 Sarah Swanson & John Bushey
 Sharon Thompson
 Gale & Charlie Willauer ^

In Honor/In Memoriam

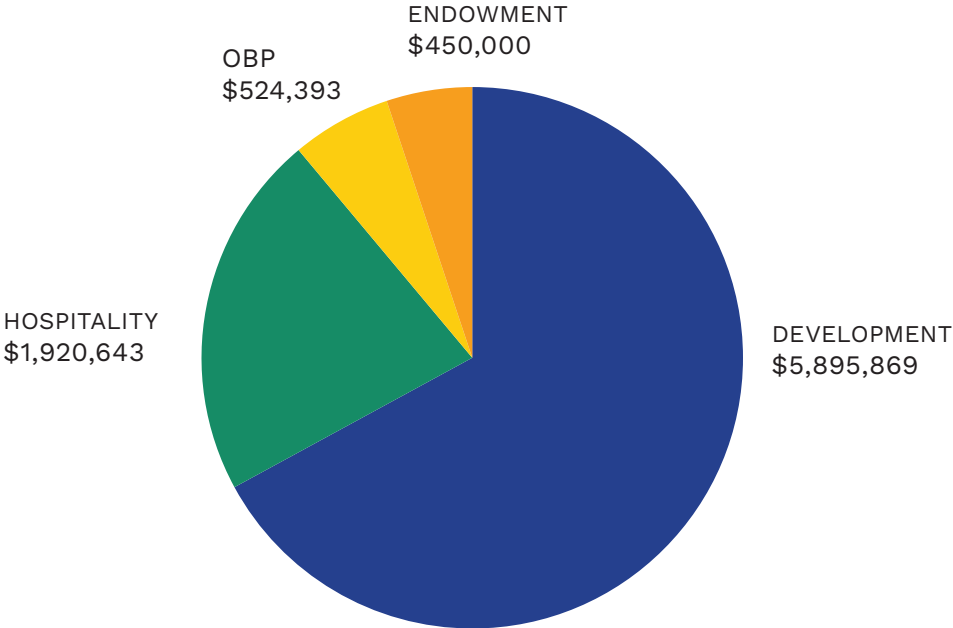
Anonymous *in memory of David Moriah*
 Anonymous *in honor of*
Monique & Matt Willian
 Anonymous *in honor of Curt Woolfrey*

Kirk & Peggy Davenport *in honor of*
Monique & Matt Willian
 Jacob Family Foundation *in memory*
of Dary Jacob
 Daniel Marra & Barbara Leonard *in honor*
of Tyler Marra
 Massachusetts Convention Center Authority
in honor of Sylvia Watts McKinney
 Craig Minoff *in memory of Judy Yabloug*
 Alexander Packard *in honor*
of Jessica Thompson Somol
 Kathleen & Ross Sherbrooke *in memory*
of Peter O. Willauer, with love & respect
 for our friendship & efforts ashore &
 afloat over six plus decades ^
 Stephanie & Lee Spiegel *in honor*
of Cameron Block
 Laurie Wallace *in honor of Daisy Ortega*
 Roslyn Watson *in honor of*
the leadership of Sylvia Watts McKinney
 Suzanne & John Willian *in honor of*
Monique & Matt Willian

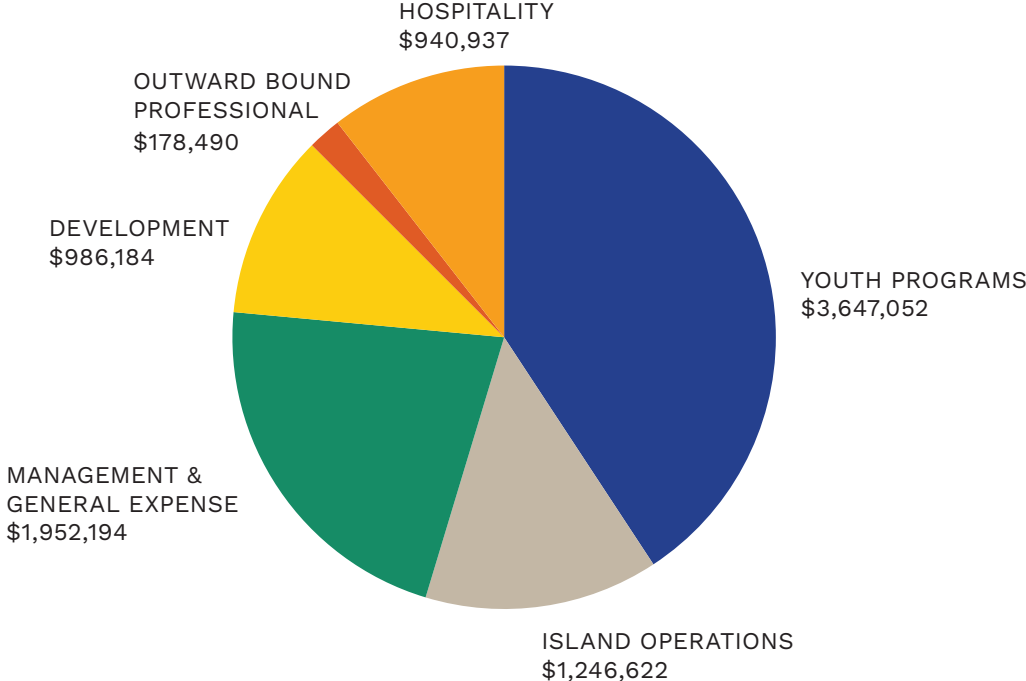
In-Kind Donors

Ali Price
 Andrea M. Micci
 Andrew Scholte & Sarah Clark Scholte
 Ashley Martin
 Beacon Hill Athletic Club
 Beacon Hill Hotel
 Boda Borg
 Boston Harbor City Cruises
 Boston Red Sox Foundation
 Brattle Book Shop
 Brookline Booksmith
 Caroline Duggan
 Celebrity Series of Boston
 Central Rock Gym
 Cheeky Fishing
 Chris & Darcey Bartel ^
 Cindy & Ryan Enright
 Davio's Northern Italian Steakhouse
 Delta Air Lines
 Fairmont Copley Plaza
 Forward Spine & Sport
 Freefly Systems
 Green House Agency
 Harrison Brothers
 Hogy
 Huntington Theatre Company
 Institute of Contemporary Art
 Jackie Sweeney
 Janji
 Jay Carnevale
 Jennifer Boeschstein
 Joe Gugino
 Karen & Paul DiMaura ^
 Kippers
 Kristin Stadelmann
 Level99
 Mark & Tarah Hirschey
 Michael Douvadjian
 New Balance
 Norman Crump
 Rock Spot Climbing
 Row 34
 Ryan Davies & Abigail Donovan
 Samuel & Susan Barnard ^
 Season to Taste
 Shaun Ruge
 Steve Robak
 Steve Woodsum & Anne Lovett ^
 Tap 151 Bar & Grill
 Topgolf
 Total Wine & More
 U.S. Pavement Services
 US Foods
 YETI

2025 Revenue: Total \$8.79 million



2025 Expense: Total \$8.95 million



We are registered as a Massachusetts 501 (c) (3) organization. Audited financial statements are available upon request.

Leadership & Staff

Board of Directors

Clifford Krauss (Chair)
Daryl G. David Mevs (Vice Chair)
Sylvia Watts McKinney, CEO & President
Gordon R. Penman (Clerk)
Caitlin MacDowell (Vice Clerk)
Christopher S. Bartel (Treasurer)
Jeremy Baker
Karina J. Baum, Ph.D.
Sunni P. Beville
Brandy Brooks, Ed.D.
Jeanette A. Callahan, M.D.
Margaret A. Coleman, M.D.
Ryan Enright
Jeffrey M. Greene
Mark R. Keating
David S. Kirk
Elisha W. Long
Daisy P. Ortega, M.Ed.
Cheryl B. Pinarchick
Sonja Plesset, Ph.D.
John Simoneau

Trustees Emeriti

Andrew J. Bendheim
Robert P. Bland
Nathaniel S. Coolidge
William L. Elcock
Jean P. Hammond
Warner A. Henderson
Sally D. Hurlbut
Edward J. Jenkins, Jr.

William S. McDermott
Arthur McGinnes
Hannah T.C. Moore
Thomas H. Niles*
Peter C. Nordblom
Ross E. Sherbrooke
Edward J. Stewart, III
Charles S. Willauer
Peter O. Willauer*

Advisory Board

Mark U. Hirschey (Chair)
Nicholas Brown (Vice Chair)
Brian Cali
Carlitta M. Camillo
David G. Conner
MaryAnn Dakkak, M.D.
Baily Dent
Karen S. DiMaura
William J. Ducas
Dale C. Edmunds
Dean M. Esserman
Abrigal Forrester
Brooke Freedman
Matthew Goehlert
Esthephania Gomez
Olivio Goncalves
Mossik Hacobian
Sentidra Joseph
Judith Kelly
Michael J. Kineavy
Garrett W. Kirk

Valerie LaBarge
Vinieta Lawrence
George Lewis, VI
Robert Mahoney
Francis Mainville
Omowale Moses
Imari Paris Jeffries
Marina Pastrana de Oliva
Arnold Pesnell
Jane W. Puffer
Thomas J. Ready
Michelle C. Rhodes
Andrew Scholte
Andrew V. Strawbridge
Christopher P. Sweeney
Ernest E. Washington, Jr.
Tyler S. Wick
David B. Zug

ISLE Society

Ryan McDonald (Co-Chair)
Andrea Micci (Co-Chair)
Kristen Puerta (Vice Chair)
Elizabeth Buckley
Louisa Caldwell
Jay Carnevale
Chris Cleveland
Emilee Cocuzzo
Craig Minoff
Matt Perun





CATHLEEN STONE ISLAND
OUTWARD BOUND SCHOOL



Each year, our generous supporters contribute the funding we need for our programs, our island campus, and our outstanding instructors. There are many ways to give, and we encourage both cash and non-cash gifts to support our work. More information available at cathleenstoneisland.org. Please consider making your 2026 gift today.

GIVE FROM YOUR DAF

Visit your DAF portal and make a gift directly to CSI Outward Bound – our tax ID is 04-3027900.

MAKE A STOCK GIFT

Giving appreciated securities avoids capital gains and can easily be transferred from your brokerage account.

MAKE A PLANNED GIFT

Make a bequest in your will or give a qualified charitable distribution from your IRA if you are 70 ½ or older.